



Reflections on 2017

OUR MISSION

“We make it easy to care about our community.”

The Community Foundation Serving the Heart of Western Pennsylvania (formerly the Armstrong County Community Foundation), a public nonprofit corporation, enhances the quality of life of the people of mid-Western Pennsylvania by:

- Giving grants, scholarships and organizational support to address the changing needs of our community
- Building a permanent endowment for our community and helping our donors create a legacy for the future through this endowment
- Promoting informed philanthropy and volunteerism to increase charitable resources for the region
- Providing leadership and building partnerships to identify and solve community issues

Community Foundation says goodbye to beloved director, welcomes new leadership

The Community Foundation welcomed the public to an open house on June 23, 2017 to say goodbye to their beloved longtime Executive Director Mindy Knappenberger. Mindy held the position of Executive Director for 12 years. As Mindy stated, “It’s time to move on. I’m happy with the work that I’ve done here. It’s been a privilege and now it’s time to move on and let someone else do it.” Jodi Beers took over the reins upon Mindy’s retirement.

Jodi has worked in the nonprofit arena for many years and has served on many nonprofit boards within Armstrong County. Jodi stated that she feels very blessed and excited to have been chosen and states that we are very fortunate to have so many nonprofits and volunteers in Armstrong and surrounding counties who work together for the betterment of our communities!

2017 BOARD OF DIRECTORS

Chase McClister, President
Christine Moss, Vice President
Karen Waugaman, Secretary
Autumn Vorpe-Seyler, Treasurer
Frank Baker
Dina Blake
Sandy Bradigan
Lance Whiteman
Richard Snyder, Director Emeritus

COMMUNITY FOUNDATION STAFF

Jodi Beers, Executive Director
Tracy Peters, Communications & Administrative Coordinator



2017 Annual Dinner Grant Awards

YOUR DONATIONS MADE THESE GRANTS HAPPEN!

The 2017 Annual Dinner was held on Tuesday, October 3, 2017 at the Kittanning Country Club. Prior to the evening, an independent committee reviewed over 20 grant applications which were narrowed down to the top eight. Six finalists were each asked to make a 5 minute presentation at the dinner with the dinner attendees choosing the winners.

GRANT WINNERS WERE:

Habitat for Humanity - \$4,000

Progressive Workshop - \$3,500

Lifesteps - \$3,000

Apollo Library - \$2,500

Life Choices - \$2,000

Richard G. Snyder YMCA - \$1,500

Lifesteps participant working on his sports skills.



Volunteers of Habitat for Humanity enjoying their work!



Apollo Library Game Night



Progressive Workshop workers taking a break to smile for the camera!



*I wish to be
a cowgirl*

Amelia, 6
liver transplant

Make A Wish

YOUR donations help the children!

CHILDREN'S GRANT WINNERS WERE:

Make a Wish - \$2,000

Worthington Lutheran Church

Nursery School - \$1,500

To teach and instill philanthropy in our children, the Community Foundation offers a Kids Zone at our annual dinner. This Kids Zone allows young parents in our community a night out knowing that their children are being well cared for while learning about philanthropy in a fun atmosphere.

For the past several years, the Kids Zone has been organized by Jamie and Claire Osborne. Jamie and Claire prepare activities based on the children's grants the Community Foundation receives and the children who participate in the Kids Zone decide the winner. The children then present the Children's Grant Awards to the winners.



SCHOLARSHIPS AWARDED

*Congratulations to our 2017
Scholarship Winners!*

Armstrong County Building and Loan Association Scholarship

Madeline Baillie
Jared Croyle
Anna Longwell
Melody Trudgen
Mya Gladysiewski
Jacob Bowman
Miranda Lasher
Austin Porter
Ryan Myers
Eric Hulings

Armstrong County Technical School Scholarship

Christopher Schreckengost

Evelyn Benton Nursing Scholarship

Kristen Miskinis

Dr. Samuel R. and Twila Black Medical Arts Scholarship

Kristen Miskinis
Jessica Myschisin

Bruno-Higginson Trust Education Scholarship

Abigail Trithart

Bruno-Higginson Trust Medical Scholarship

Jessica Myschisin

Burrell Township Scholarship

Jennifer Connolly

Robert A. and Geneva K. Deveney Engineering Scholarship

Alicia Velcko

John Garrott Memorial Medical Scholarship

Emily Cornman
Kristen Miskinis
Jessica Myschisin
Madison Walker

Geophysical Society Scholarship

Mitchell Hastings
Shannon Fasola
Shelley Gilliland

James K. Greenbaum Scholarship

Julie Cepec

Rich and Mary Krauland Scholarship

Alicia Velcko

Zane McMillen Memorial Scholarship

Madison Walker

Gretchen Moss Memorial Scholarship

Hunter Frazier

Kay Owen Scholarship (Adult)

Taylor Hawkins

Shawna Petrosky Memorial Scholarship

Jessica Myschisin

Richard G. Snyder Family Scholarship

Nathan Pastorek
Brendan Swanson
Nathan Pepler

Joan Tatsak Memorial Scholarship

Madison Walker
Ashton Callipare

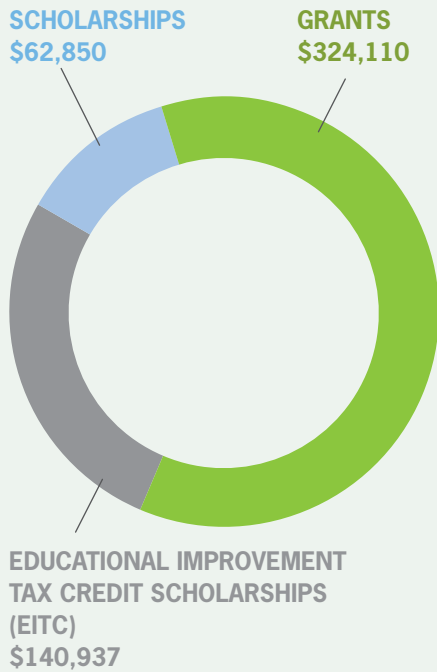
Clifford Vogan Medical Scholarship

Melody Trudgen
Ashton Callipare
Taylor Relich
Rachel Stirling

GRANT RECIPIENTS

- ACMH Foundation Patient Care Fund
- Allegheny Valley Land Trust
- Apollo Library
- Armstrong Community Theater
- Armstrong County Historical Society Endowment Fund
- Armstrong High School Social Studies Class
- Armstrong Trust for Historic Preservation
- Community Action Agency Food Bank
- East Franklin Volunteer Fire Department
- Elderton Borough
- Ford City Public Library
- Ford City Renaissance
- Freeport EMS
- Freeport Library
- Freeport Meals on Wheels
- Freeport Renaissance
- Grace Christian School
- Habitat for Humanity
- HAVIN
- Hose Company #6, Kittanning
- Friends of the Kittanning Public Library Endowment Fund
- Kittanning Salvation Army
- Life Choices
- Lifesteps
- Lutherlyn
- Make A Wish
- Orphans of the Storm
- PA Governor's School for the Sciences
- Progressive Workshop
- Richard G. Snyder YMCA
- South Buffalo Volunteer Fire Department
- St. John's Lutheran Church
- Sugarcreek Volunteer Fire Department
- Union First Presbyterian Church
- West Kittanning Borough
- Worthington Lions Club
- Worthington Lutheran Church School
- Worthington-West Franklin Library
- Worthington-West Franklin Volunteer Fire Department

Total Funding *Distributed in 2017*



At the Community Foundation, our endowment consists of 81 funds that allow us to award hundreds of thousands of dollars in grants & scholarships every year!

WHAT IS THE POWER OF ENDOWMENT?

An endowment is a permanent fund invested for growth over time. A percentage of the growth is distributed through grants to your areas of interest in your community.

The example below is an example how, after 20 years through the power of endowment, your fund could grant over \$15,000 and the value of your fund would be over \$4,000 of your initial donation.

- YEAR 1:** You the donor, establishes a fund with \$10,000
- YEAR 10:** Your fund balance would have grown to \$12,371 with granting to nonprofits = \$6,942
- YEAR 15:** Your fund balance would have grown to \$13,340 with granting to nonprofits = \$10,826
- YEAR 20:** Your fund balance would have grown to \$14,385 with granting to nonprofits = \$15,014

**Based on funds performing at an 8% rate each year. Actual investments vary based on market and risk level of investments.*



WWW.KLINGENSMITHS.COM



Your Hometown Credit Union
Serving Armstrong County

101 Deer Park Road
Worthington, Pa. 16262
724-297-3084

Habitat for Humanity volunteers



MORTGAGES UP TO 90% FINANCING



NextTier Bank

1.800.262.1088 | www.nexttierbank.com

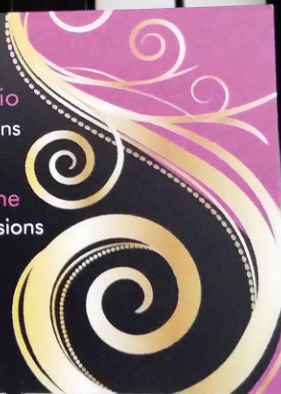
724-543-4980

Claire's Music Studio
Piano and Voice Lessons

Claire Osborne
Vocalist for all occasions

116 Willow Dr
Kittanning, PA 16201

clairesmusicstudio@gmail.com
find us on Facebook





How Can YOU Help?

*Worthington Evangelical Church Nursery
School student enjoying a new adventure!*

BECOME A DONOR.

At the Community Foundation we are always happy to meet with you to discuss your goals and answer any questions you may have.

CREATE A FUND.

Starting a Fund is easy. First we would meet with you to discuss your goals and interests. Then, we would complete a Fund agreement encompassing these goals and interests. Funds can be opened with any amount but must reach a minimum of \$10,000 to begin making grants. Funds may be opened with a current gift or a planned gift.

GIVE NOW.

By making a donation now, you can make an immediate impact in your community. You may donate to an existing fund or you can make a donation to our Founders Fund which is distributed to areas where the need is greatest.

WANT TO GIVE LATER?

Maybe your goal is to plan now but give later. This can be done in a number of ways.

- Name the Community Foundation in your will or trust
- Transfer Life Insurance
- Donate stock, real estate or personal property

CHARITABLE BEQUEST.

A charitable bequest is simply a distribution from your estate to a charitable organization through your last will and testament. There are different kinds of bequests. For each, you must use very specific language to indicate the precise direction of your assets, and to successfully carry out your final wishes. In any charitable bequest, be sure to name the recipient accurately.

General Bequests are legacies left to certain people or causes that come from the general value of the estate, and are made by designating a specific dollar amount, a particular asset or a fixed percentage of your estate to the cause of your choice.

Specific Bequests are made when a particular item or property is bequeathed for a designated purpose. (i.e., instruments bequeathed to the Community Foundation to support an established Community Foundation fund or a specific nonprofit organization).

Residuary Bequests are made when you intend to leave the residue portion of your assets after other terms of the will have been satisfied.

Contingency Bequests allow you to leave a portion of your estate to a particular charity if your named beneficiary does not survive you.

Without a will, there is no mechanism in place to make a bequest, so here are the steps you should take to make sure your wishes are granted.

- Make a list of organizations or causes that you would like to support.
- Make a detailed list of your assets (financial, real estate, vehicles, jewelry, collectibles, musical instruments, etc.)
- Set up an appointment with your financial analyst or attorney, or planned giving officer at the organization you intend to support.

These professionals will help sensitively guide you through the process.

This information is for general planning purposes only. Donors should consult with their tax professionals and/or financial planners or attorneys for their own unique situations and applicable laws.



Lifesteps



Apollo Library

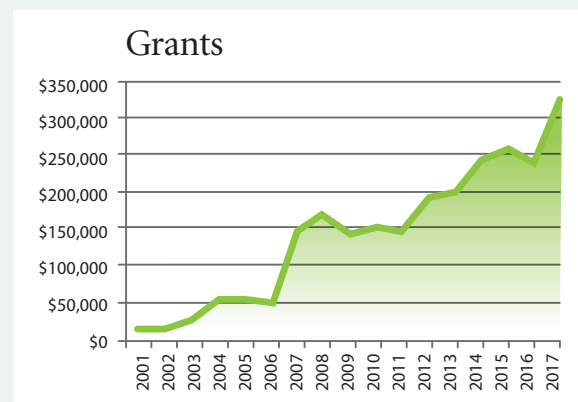
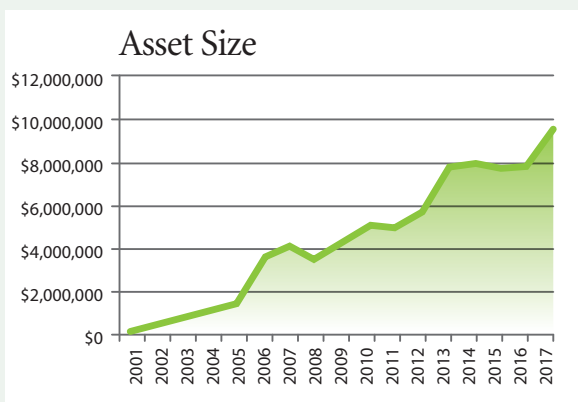
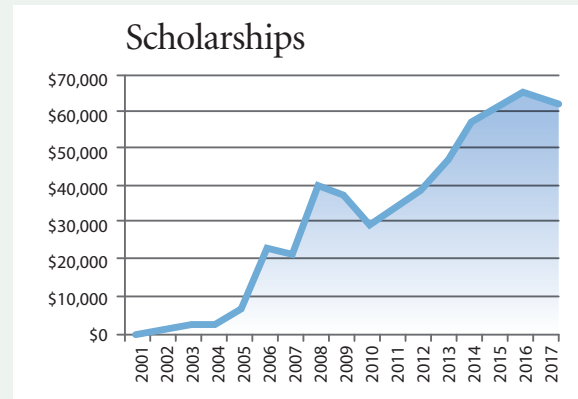
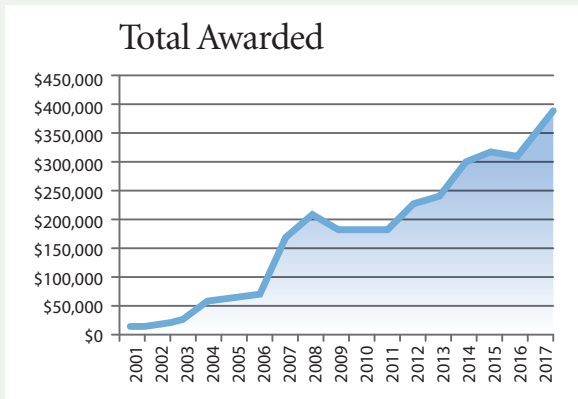


Progressive Workshop

Financial *Information*

	2001	2002	2003	2004	2005	2006	2007	2008	2009
Asset Size	\$204,074	\$495,321	\$810,352	\$1,146,950	\$1,464,921	\$3,622,737	\$4,098,308	\$3,457,288	\$4,368,526
# Scholarships	0	1	1	1	3	12	12	22	30
# Grants	5	7	10	18	23	37	76	83	71
\$ Scholarships	\$0	\$1,000	\$2,000	\$3,000	\$6,500	\$22,600	\$21,250	\$39,650	\$37,200
\$ Grants	\$14,500	\$15,000	\$25,440	\$53,534	\$55,375	\$48,628	\$147,998	\$167,435	\$143,056
Total \$ Awarded	\$14,500	\$16,000	\$27,440	\$56,534	\$61,875	\$71,228	\$169,248	\$207,085	\$180,256

	2010	2011	2012	2013	2014	2015	2016	2017
Asset Size	\$5,007,045	\$4,928,702	\$5,719,833	\$7,857,838	\$7,973,925	\$7,768,410	\$7,903,150	\$9,567,513
# Scholarships	29	31	27	27	34	40	33	40
# Grants	72	50	61	56	77	80	84	74
\$ Scholarships	\$29,650	\$34,000	\$38,650	\$46,500	\$57,150	\$61,700	\$65,250	\$62,850
\$ Grants	\$151,630	\$148,050	\$190,712	\$195,470	\$241,380	\$256,730	\$240,496	\$324,110
Total \$ Awarded	\$181,280	\$182,050	\$229,362	\$241,970	\$298,530	\$318,430	\$305,746	\$386,960





Lifesteps workers are all smiles!



Apollo Library Game Night



Habitat volunteers hard at work!

lifechoices

EMPOWERING FAMILIES WITH LIFE-AFFIRMING OPTIONS THROUGH OUR



located in Indiana,
Kittanning, and Butler



yourlifechoicesinfo.com

724-545-2826

Funds

COMMUNITY FOUNDATION FUNDS

- Founders Fund
- Nancy Brody Fund for Children
- Ben Franklin Trust
- Give365 Fund
- Harvey Heilman Endowment Fund
- Ralph & Susan Kneppshield Fund for Children & Youth Fund
- John Rohrer Fund

ORGANIZATIONAL FUNDS

- Armstrong Community Theater Fund
- Armstrong County Historical Museum & Genealogical Society Endowment Fund
- Ford City Public Library Endowment Fund
- Friends of the Kittanning Public Library Endowment Fund
- Grace Brethren Church Endowment Fund
- Parker Personal Care Endowment Fund
- Pittsburgh Geological Society Endowment Fund
- Redbank Valley Community Center Endowment Fund
- Richard G. Snyder YMCA Campus Emergency Fund
- Richard G. Snyder YMCA Campus Fund

SCHOLARSHIP FUNDS

- Armstrong Concert Band Scholarship
- Armstrong County Bar Association Scholarship
- Armstrong County Building & Loan Association Charitable Scholarship
- Armstrong County Technical School Scholarship
- Evelyn Benton Nursing Scholarship
- Dr. Samuel R. & Twila Black Medical Arts Scholarship
- Bruno-Higginson Trust Scholarship
- Brett Charmello Memorial Scholarship
- Burrell Township Scholarship
- Dannette “Liffy” Cockroft Charitable Scholarship
- Robert A. & Geneva K. Deveney Engineering Scholarship
- Marjorie Dodson Memorial Scholarship
- Susan Falsetti-Burdett Memorial Scholarship Fund for Music
- Dr. John Garrott Memorial Scholarship
- Geophysical Society of Pittsburgh Scholarship
- James K. Greenbaum Scholarship
- Nathan Keibler Think B4 U Act Scholarship
- Richard and Mary Krauland Scholarship
- Zane McMillen Memorial Scholarship
- Gretchen Moss Memorial Scholarship
- Kay Detrick Owen Scholarship
- Ruth E. Owen Scholarship
- Michael Petroncheck Musical Scholarship
- Shawna Petrosky Memorial Scholarship
- Quality Life Services Healthcare Career Scholarship
- Richard G. Snyder Family Scholarship
- Joan Tatsak Memorial Scholarship
- Dr. Clifford Vogan Medical Scholarship

DONOR ADVISED FUNDS

- Armstrong Trust for Historic Preservation Fund
- Baker Family Charitable Fund
- Raymond A. Boarts Fund
- Paul & Sharon Bradigan Fund
- James A. Frederick Fund
- Kittanning Rotary Club Fund
- Lee & Myrtle McKelvey Willing Workers Trust for Spiritual & Church Enhancement Fund
- Mervis Family Fund
- Asa Miller Foundation Fund
- Brian & Cheryl Morris Fund
- Jamie & Mindy Owen Fund
- Kay & Steven Owen Fund
- Frank, Kristen, and Evan Samosky Fund
- Seifert Family Fund
- Seyler General Charitable Fund
- Mission Fund in Memory of Chuck & Pearl Snyder
- Richard G. Snyder Endowment for the Arts
- Richard G. & Barbara A. Snyder General Charitable Fund
- Ed & Kay Steiner Memorial Fund
- Buck Stitt Memorial Bible Fund
- Kenneth R. Tack, Jr. & B. Maxine Tack Mission Fund
- William H. and Dorothy S. Toy General Charitable Fund

DESIGNATED FUNDS

- Gordon Ariadne Fund
- William E. Blose Family Memorial Fund
- Charles A. & Margaret I. Bonner Memorial Recreation & Parks Fund
- Patricia J. Campbell Memorial Fund
- Catherine Helen Cogley & Catherine Hutchison Charity Fund
- Willanna Millen DiCiero & William A. DiCiero Designated Fund
- Elderton/Plumcreek History Fund
- Furniture World East Education Fund
- The Leo & Mildred Gispanski Family Fund
- George M. & Mary P. Hutchison Memorial Fund
- Alvin E. Kuntz Jr. Charitable & Barry P. Kuntz Memorial Fund
- Cheri Roberts Memorial Fund
- John Shoop Fund
- Dorothy A. Winslow Fund

